

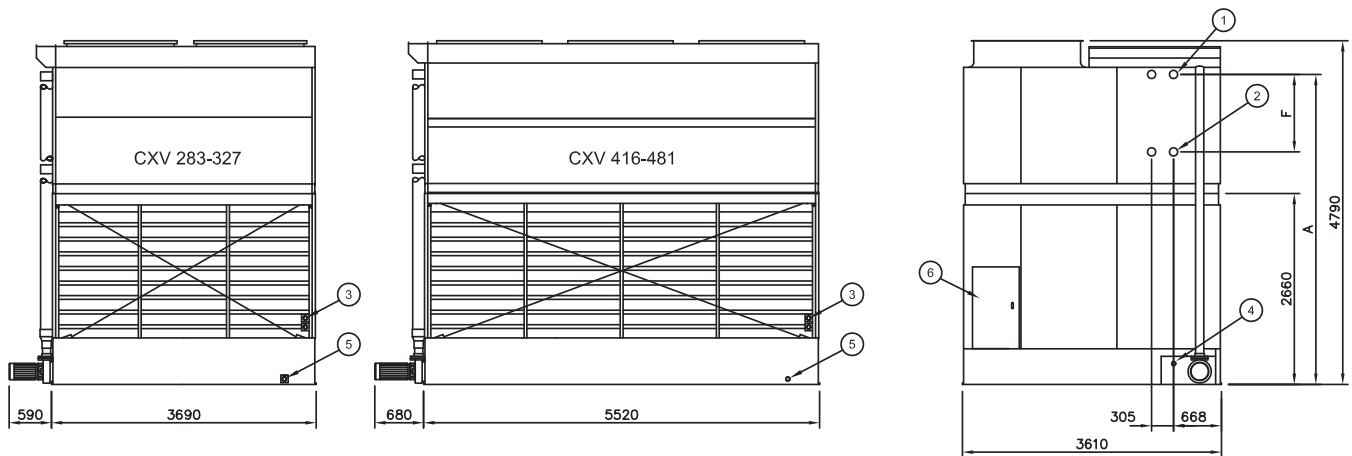


TECHNICAL DATA



CXV Evaporative Condenser

Technical Data



1. Refrigerant in ND 100, 2. Refrigerant out ND 100, 3. Make-up ND 25, 4. Overflow ND 80, 5. Drain ND 50, 6. Access



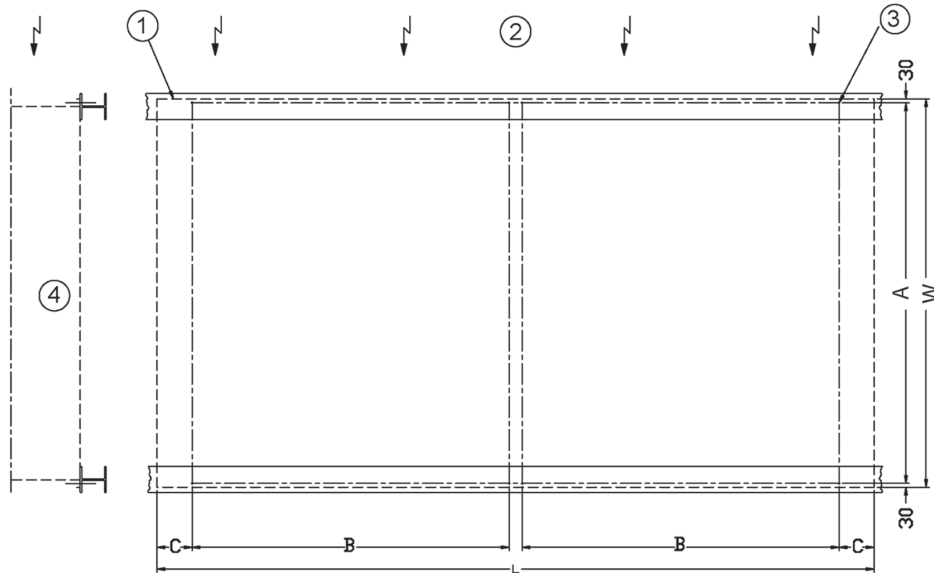
Do not use for construction. Refer to factory certified dimensions. In the interest of product improvement, specifications and dimensions are subject to change without notice.

Model Number CXV	Base Heat Rejection (kW)	Weight			Air Flow (m ³ /s)	Fan Motor (kW)	Spray Water Flow (l/s)	Pump Motor (kW)	R-717 Charge (kg)	Remote Sump		F (mm)
		Shipping (kg)	Operating (kg)	Heaviest Section (Coil) (kg)						Drain Size (mm)	Operating Weight (kg)	
CXV 283	1219	5850	9050	3960	35.0	11.0	45.1	4.0	123	200	8800	1080
CXV 297	1280	5850	9080	3990	38.5	15.0	45.1	4.0	123	200	8823	1080
CXV 309	1331	5900	9100	4010	41.5	18.5	45.1	4.0	123	200	8845	1080
CXV 327	1409	6380	9650	4490	43.1	22.0	45.1	4.0	146	200	9395	1314
CXV 416	1792	8400	13230	5750	53.0	11 & 5.5	53.6	5.5	182	200	12936	1080
CXV 437	1883	8440	13270	5790	58.3	15 & 7.5	53.6	5.5	182	200	12977	1080
CXV 454	1956	8490	13320	5840	62.8	18.5 & 11	53.6	5.5	182	200	13014	1080
CXV 468	2016	8500	13330	5850	66.7	22 & 11	53.6	5.5	182	200	13064	1080
CXV 481	2072	9220	14150	6570	65.3	22 & 11	53.6	5.5	216	200	13882	1314

**NOTES:****APPLICABLE ON ALL MODELS**

1. The standard right hand arrangement as shown has the air inlet side on the right when facing the connection end. Left hand can be furnished by special order. Pump and refrigerant connections are always located on the same end of the unit.
2. Standard refrigerant in-and outlet connection sizes are ND100, beveled for welding for all CXV models. Other connection sizes are available on special order.
3. Fan motor sizes shown in the table are for 0 mm external static pressure (ESP).
4. Refrigerant charge listed is R717 operating charge. To determine operating charge for R22, multiply charge by 1.93 and for R134A by 1.98.
5. Operating weight shown in the tables is based on total unit weight, weight of refrigerant operating charge and basin filled to overflow level.

Structural Support



Model Number CXV	Max. Deflection (mm) (4)	Dimensions (mm)					No. of 16 mm Anchor bolts
		W	L	A	B	C	
74 - 93	5	2385	1860	2325	-	255	4
117 - 147	8	2385	2775	2325	-	255	4
153 - 193	10	2385	3690	2325	-	255	4
207 - 296	10	2985	3690	2925	-	255	4
283 - 327	10	3610	3690	3550	2440	255	4
338 - 435	12	2985	5520	2925	2440	270	8
416 - 481	12	3610	5520	3550	2440	270	8



NOTES:

- Support beams and anchor bolts to be selected and installed by others.
- All support steel must be level at the top.
- Beams must be selected in accordance with accepted structural practice.
- Maximum deflection is for units with water level in pan at overflow.
- Consult your BAC representative for the weight loading diagram before selecting support beams.



CXV Questions?

VISIT WWW.BALTIMOREAIRCOIL.COM.AU:

OR CALL 1300 134 662 (AUSTRALIA)
0800 225 842 (NEW ZEALAND)



**BALTIMORE
AIRCOIL AUSTRALIA**

COOLING TOWERS

CLOSED CIRCUIT COOLING TOWERS

ICE THERMAL STORAGE

EVAPORATIVE CONDENSERS

HYBRID PRODUCTS

PARTS & SERVICES

www.BaltimoreAircoil.com.au

120 Wisemans Ferry Road, Somersby NSW 2250 > Telephone (Australia): 1300.134.622 > Telephone (New Zealand): 0800.225.842